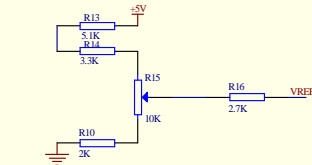


细分选择开关

M3	M2	M1	细分数
ON	ON	ON	1
ON	ON	OFF	2
ON	OFF	ON	4
ON	OFF	OFF	8
OFF	ON	ON	16
OFF	ON	OFF	32
OFF	OFF	ON	64
OFF	OFF	OFF	128



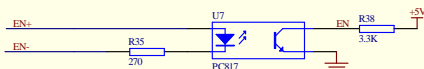
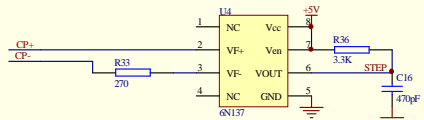
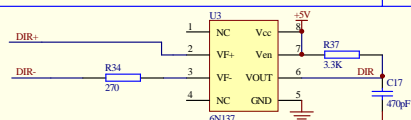
参考电压调节

$$I_{out} = (V_{REF} / 5) / 0.2$$

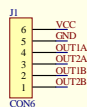
$$V_{REF} = I_{out}$$

最大输出电流2.94A

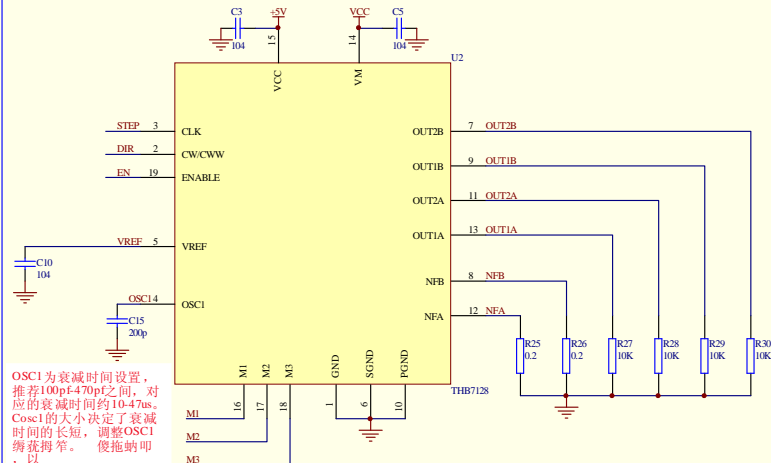
最小输出电流0.49A



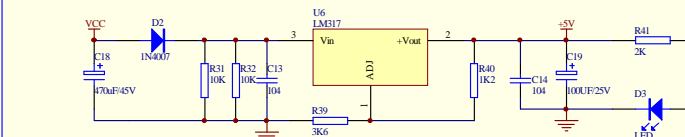
光耦/高速光耦隔离输入



输入输出接线端口



THB7128驱动芯片



电源模块

具有防反接功能 由LM317构建5V芯片工作电压

Title		
Size	Number	Revision
Date	19-Nov-2010	Sheet of
File	D:\工作\驱动\THB7128.dwg	Drawn By: